

# ADVANCED DEMOLITION SOLUTIONS



## OSA RANGE



## POWER AND PERFORMANCE BUILT OSA TOUGH

OSA demolition systems set the international benchmark for technically advanced and industry proven demolition tools.

Exclusive dealer for Australia, New Zealand & Pacific Islands

[www.bossattachments.com.au](http://www.bossattachments.com.au)

☎ 1300 116 661







## **A Partnership Forged in Steel**

Boss Attachments is proud of their long standing association with OSA and is now the leading international distributor for this outstanding brand.

During the past 2 decades Boss has established an outstanding relationship with OSA and have helped them grow from a small, unknown brand to become the international leader that it is today

The OSA range of demolition equipment has been proven in the harshest environments on earth and they deliver major benefits for a wide range of business sectors.

That's why OSA is the "Go To" brand that our Australasian clients know they can always rely on for lower operating costs, uncompromising performance and improved production.

[\*\*www.bossattachments.com.au\*\*](http://www.bossattachments.com.au)





## **We work harder to give you the best**

The OSA Demolition equipment was founded in the early 90's and has grown to be a well-respected market leader.

Since our inception OSA has provided technologically advanced, performance proven equipment to the demolition, construction and mining industries.

OSA's state-of-the-art manufacturing facility is specifically designed and constructed for the purpose of manufacturing the worlds most Innovative and technologically advanced demolition equipment.

Our state-of-the-art manufacturing involves passionate and highly trained work-force and utilises the world's finest raw materials like HARDOX and STRENX.

OSA has built a professional and competent dealer network with specially trained technicians strategically located around the globe to deliver prompt and professional service - no matter where you are located. This means that OSA can respond to users needs quickly to ensure your equipment is maintained at its optimum performance level.

Together OSA and its dealers have a single focus – the delivery of extreme added value performance through a policy of honesty, integrity, credibility and quality.



# RS SERIES CRUSHERS

## HYDRAULIC ROTATION

OSA crushers are equipped with a 360° hydraulic rotation system to allow for correct alignment during use. All medium-large models use a double motor design to increase the rotation torque, and reduce the amount of stress applied to these components.

## PRV SYSTEM

Innovative Pressure Relief Valve system protects the crusher from hydraulic pressure spikes.

## HOUSING

Manufactured entirely using HARDOX and WELDOX. These materials make it the most robust and effective attachment for primary demolition of reinforced concrete structures.

## HYDRAULIC CYLINDERS

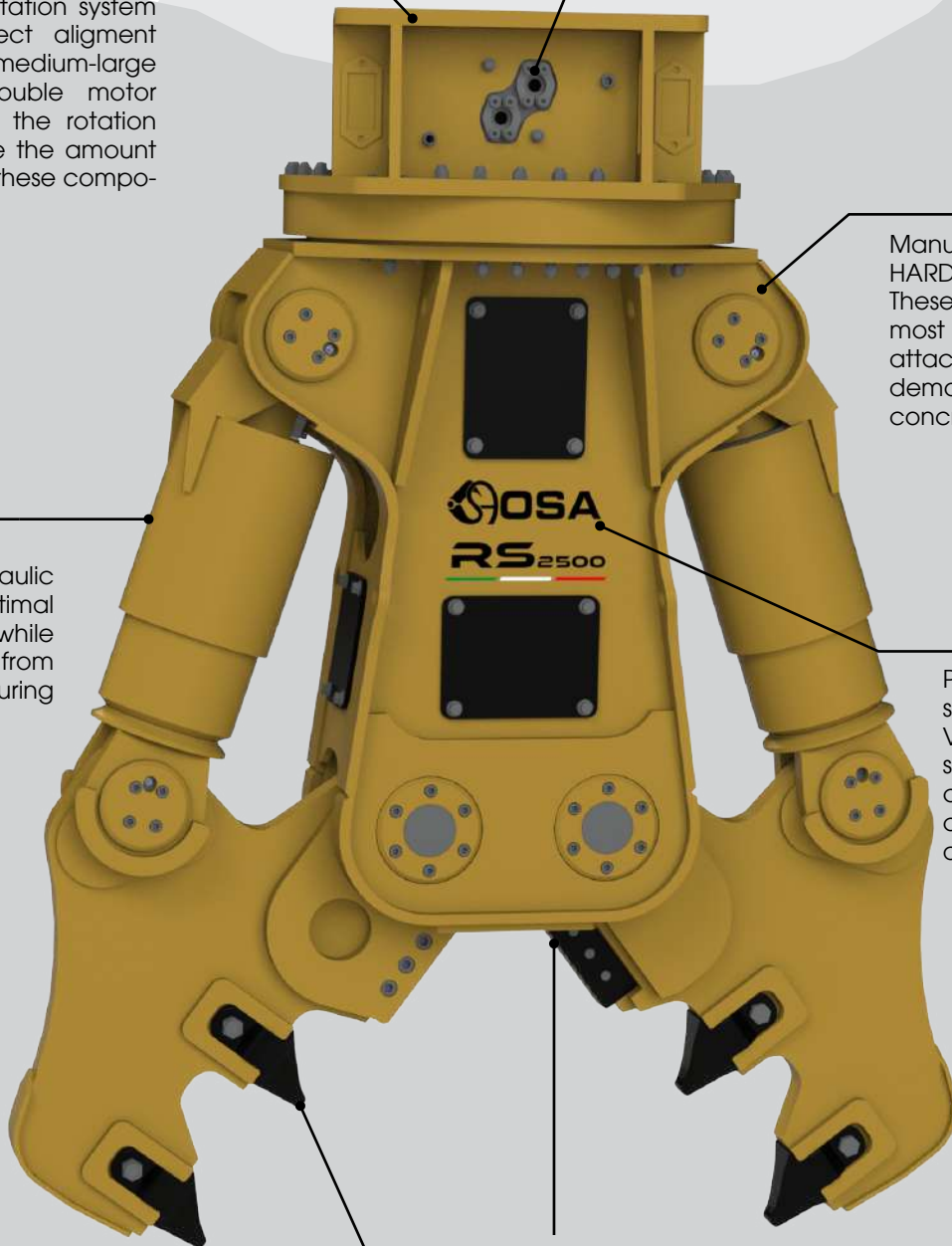
The two inverted hydraulic cylinder provide optimal crushing power, while being protected from accidental impact during use.

## SPEED VALVE

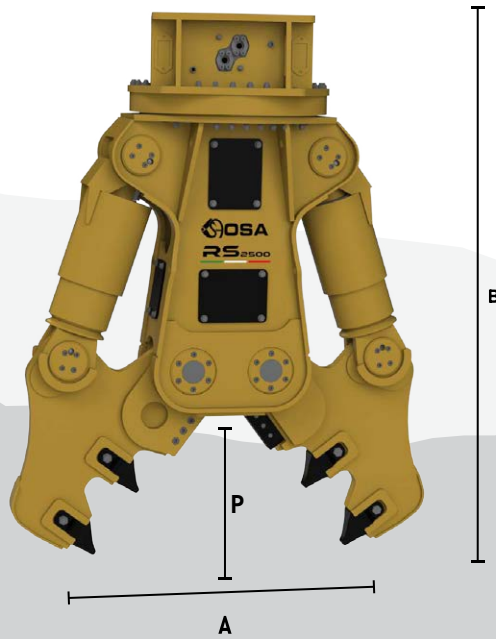
Present in medium-large size crushers, the Speed Valve significantly increases the opening and closing speed of the cylinders to provide Fast and Efficient cycle times.

## TEETH AND BLADES

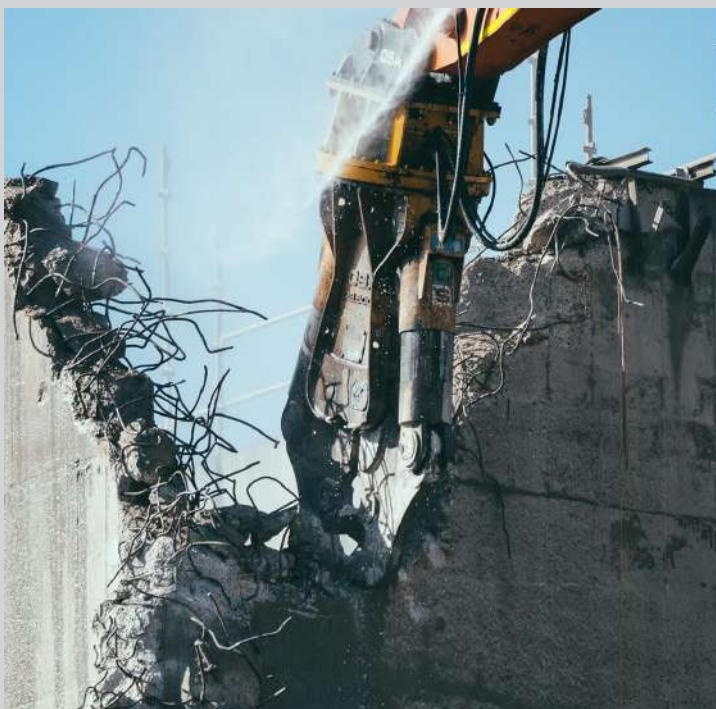
The teeth have a patented cutting profile that increases penetration and crushing of the material. Reversible blades increase their useful life.



# RS SERIES



MODEL	U.M.	RS 200	RS 1000	RS 1500	RS 1800	RS 2000	RS 2500	RS 4000	RS 5000	RS 6000	RS 8000	RS 12000
OPENING (A)	mm	250	600	710	825	920	1100	1350	1500	1650	1830	2300
	in.	10	24	28	32	36	43	53	59	65	72	91
LENGHT (B)	mm	840	1700	2010	2180	2300	2700	2800	2850	3000	3200	3820
	in.	33	67	79	85	90	106	110	112	118	126	150
WIDTH (P)	mm	300	460	480	665	740	880	1034	1055	1080	1185	1410
	in.	12	18	19	26	29	35	41	42	43	47	56
EXCAVATOR WEIGHT	Kg	1.5/3	12/16	16/22	22/30	30/40	35/50	40/50	50/65	60/80	80/100	90/150
	lbs	3300/	26500/	35000/	48500/	66000/	77000/	88200/	110000/	130000/	175000/	200000/
		6600	35000	48500	66000	88000	110000	110000	143000	175000	220000	330000
EQUIPMENT WEIGHT	Kg	210	1150	1400	1900	2200	2750	3800	4800	5800	7900	11950
	lbs	463	2535	3085	4189	4850	6063	8378	10582	12787	17416	26345
OIL PRESSURE	Bar	220	310	340	340	340	340	340	340	340	340	340
	psi	3190	4496	4930	4930	4930	4930	4930	4930	4930	4930	4930
OIL CAPACITY	L/min	20/30	110/150	150/180	200/230	220/300	250/350	300/380	350/400	380/450	400/500	450/700
	gal/min	5/8	53/58	58/63	66/79	74/92	79/90	79/100	92/106	100/119	106/132	119/185
ROTATION OIL PRESSURE	Bar	50/60	120/130	120/130	120/130	120/130	120/130	120/130	120/130	120/130	120/130	120/130
	psi	725/870	1740/1885	1740/1885	1740/1885	1740/1885	1740/1885	1740/1885	1740/1885	1740/1885	1740/1885	1740/1885
ROTATION OIL CAPACITY	L/min	15	20/30	20/30	20/30	20/30	50/60	50/60	50/60	50/60	50/60	70/80
	gal/min	4	5/8	5/8	5/8	5/8	13/16	13/16	13/16	13/16	13/16	18/21



# MC SERIES

## MULTISYSTEM

### HYDRAULIC ROTATION

OSA crushers are equipped with a 360° hydraulic rotation system to allow for correct alignment during use. All medium-large models use a double motor design to increase the rotation torque, and reduce the amount of stress applied to these components.

### PRV SYSTEM

Innovative Pressure Relief Valve system protects the crusher from hydraulic pressure spikes.

### HYDRAULIC CYLINDERS

The two inverted hydraulic cylinders provide optimal crushing power, while being protected from accidental impacts during use.

### SPEED VALVE

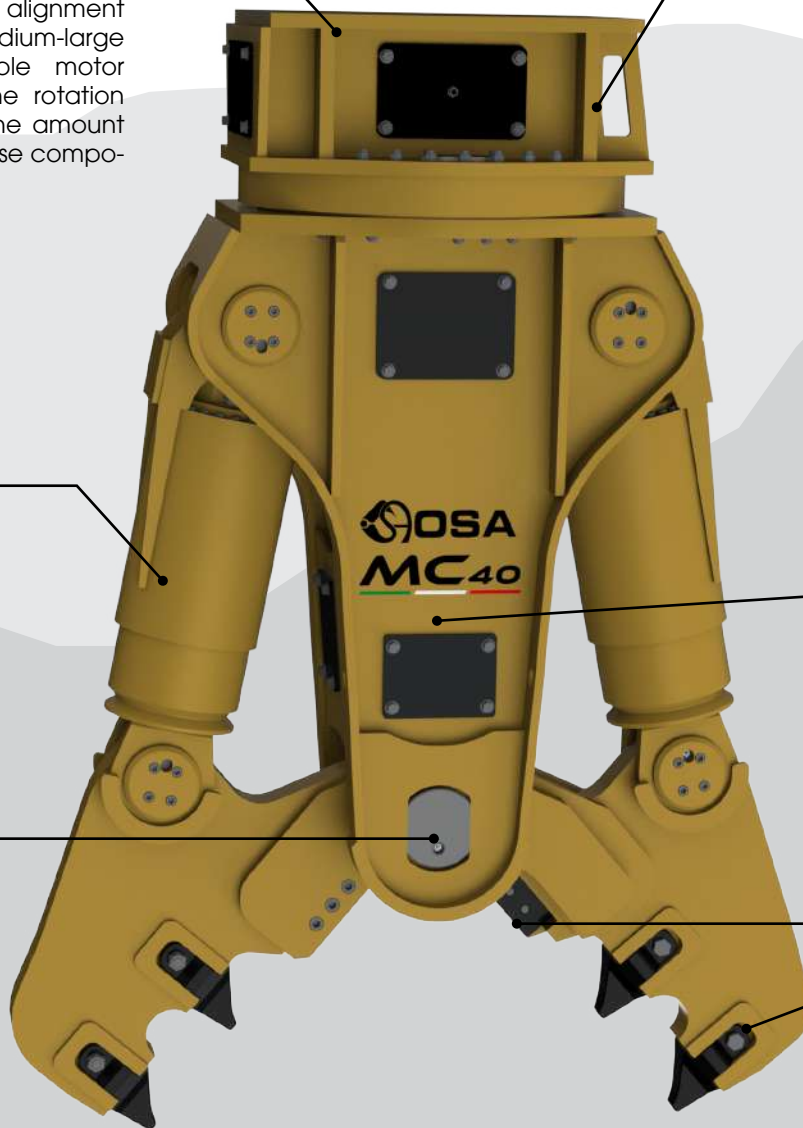
Present in medium-large size crushers, the Speed Valve significantly increases the opening and closing speed of the cylinders to provide Fast and Efficient cycle times.

### MULTI-KIT

The multisystems have the particularity of replacing the kit to be installed according to the processing needs, thus making the MC series the maximum expression of versatility, functionality and power.

### TEETH AND BLADES

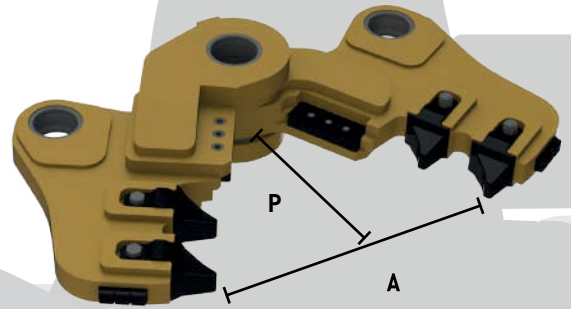
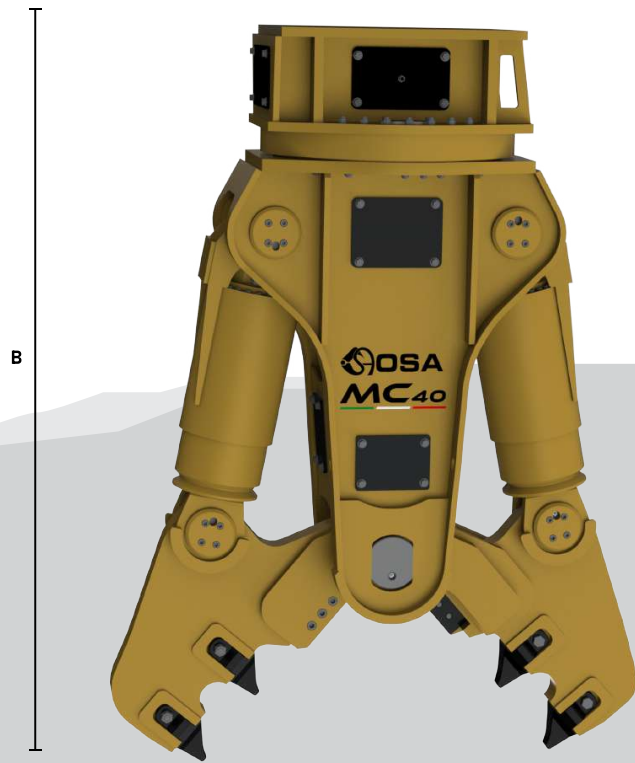
The teeth have a patented cutting profile that increases penetration and crushing of the material. Reversible blades increases their useful life.



MC MODEL	U.M.	MC 5	MC 7	MC 10	MC 15	MC 18	MC 24	MC 30	MC 40	MC 55	MC 80	MC 110
EXCAVATOR WEIGHT	Ton	4/8	7/11	12/15	14/19	21/28	26/36	30/38	36/50	50/70	80/100	85/130
	lbs	8800/ 17600	15500/ 24200	26500/ 33000	31000/ 42000	46000/ 62000	57300/ 79400	66000/ 84000	79400/ 110000	110000/ 155000	177000/ 220000	188000/ 286000
EQUIPMENT WEIGHT (WITHOUT KIT)	Kg.	283	450	650	990	1210	1640	2380	2510	3791	5220	7300
	lbs	624	992	1433	2182	2667	3615	5247	5534	8357	11508	16094
OIL PRESSURE	Bar	250	310	310	340	340	340	340	340	340	340	340
	psi	3625	4496	4496	4931	4931	4931	4931	4931	4931	4931	4931
OIL CAPACITY	L/min	30/50	100/150	140/160	200/240	250/300	260/320	280/360	300/350	340/380	400/500	500/600
	gal/min	7/13	26/39	37/42	52/63	66/79	68/84	73/95	79/92	89/100	106/132	132/158
ROTATION OIL PRESSURE	Bar	50	60	120/130	120/130	120/130	120/130	120/130	120/130	120/130	130	130
	psi	725	870	1740/1885	1740/1885	1740/1885	1740/1885	1740/1885	1740/1885	1740/1885	1885	1885
ROTATION OIL CAPACITY	L/min	15	20	20/30	20/30	20/30	20/30	50/60	50/60	50/60	50/60	70/80
	gal/min	4	5	5/8	5/8	5/8	5/8	13/16	13/16	13/16	13/16	18/21



# MC SERIES CRUSHER KIT

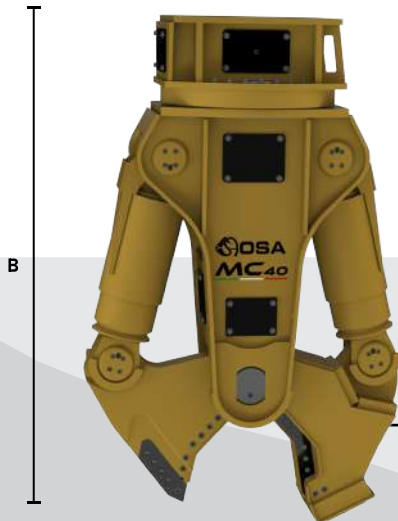
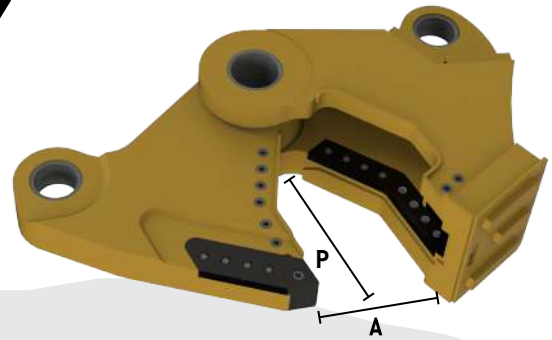


Ideal for the primary demolition of reinforced concrete structures

MC MODEL (CRUSHER KIT)	U.M.	MC 5	MC 7	MC 10	MC 15	MC 18	MC 24	MC 30	MC 40	MC 55	MC 80	MC 110
OPENING (A)	mm	410	525	670	710	800	850	920	1150	1300	1700	1900
	in.	16.15	20.7	26.4	27.95	31.5	33.5	36.2	45.28	51.18	66.93	74.8
LENGHT (B)	mm	1020	1446	1680	1900	2050	2200	2420	2600	2850	3200	3500
	in.	40.2	56.9	66.1	74.8	80.7	86.6	95.3	102.4	112.2	126	137.8
WIDHT (P)	mm	250	350	475	520	540	540	550	600	810	1110	1240
	in.	9.85	13.78	18.7	20.47	21.26	21.26	21.65	23.62	31.89	43.7	48.82
EQUIPMENT WEIGHT	Kg	115	200	270	457	522	621	741	873	1412	2580	3500
	lbs	253	440	595	1007	1150	1370	1633	1925	3113	5688	7716



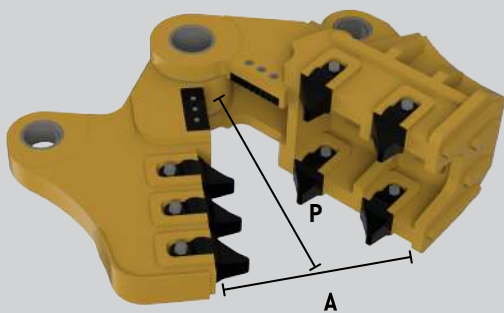
# MC SERIES SHEAR KIT



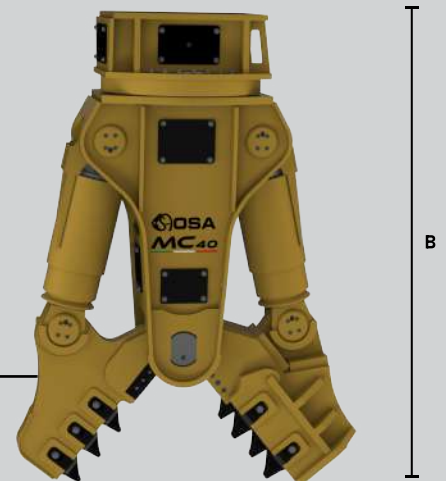
Ideal for cutting iron material such as pipes, profiles and sheets

MC MODEL (SHEAR KIT)	U.M.	MC 5	MC 7	MC 10	MC 15	MC 18	MC 24	MC 30	MC 40	MC 55	MC 80	MC 110
OPENING (A)	mm	340	270	370	360	460	540	560	620	700	750	800
	in.	13.4	10.7	13.8	14.20	18.1	20.1	22	24.4	27.6	29.5	31.5
LENGHT (B)	mm	1050	1466	1545	1740	1910	2100	2300	2430	2525	2610	2815
	in.	41.33	57.71	60.82	68.5	75.19	82.68	90.55	95.66	99.41	102.76	110.83
WIDTH (P)	mm	280	370	340	360	400	400	410	430	485	520	555
	in.	11.02	14.57	13.38	14.17	15.75	15.75	16.14	16.92	19.09	20.47	21.85
EQUIPMENT WEIGHT	Kg	92	180	240	400	430	700	780	1100	1580	2000	2500
	lbs	203	397	529	882	948	1543	1720	2425	3483	4409	5511

# MC SERIES PULVERISER KIT



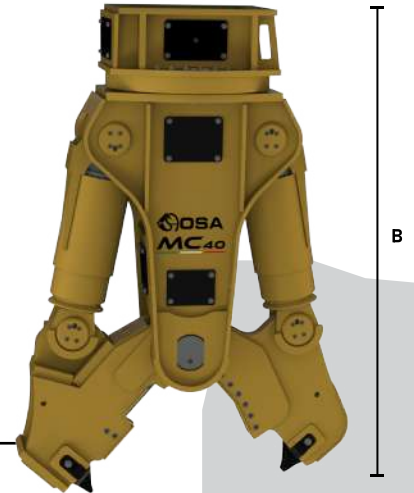
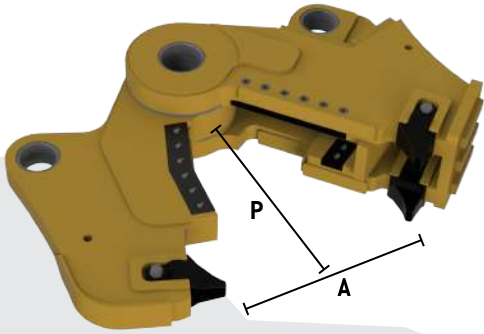
Suitable for secondary demolition, in particular to separate reinforcing rods from concrete



MC SERIES (PULVERIZER KIT)	U.M.	MC 5	MC 7	MC 10	MC 15	MC 18	MC 24	MC 30	MC 40	MC 55	MC 80	MC 110
OPENING (A)	mm	310	500	570	650	800	830	920	980	1100	1600	1800
	in.	12.2	19.7	23.6	26.8	31.5	32.7	35.4	38.6	43.3	63	70.9
LENGHT (B)	mm	1020	1486	1715	1920	2080	2210	2450	2600	2870	3355	3685
	in.	40.16	58.50	67.52	75.59	81.89	87	96.46	102.36	112.99	132.09	145.08
WIDTH (P)	mm	250	390	510	540	570	600	550	600	870	1265	1425
	in.	9.84	15.35	20.08	21.26	22.44	23.62	21.65	23.62	34.25	49.80	56.10
EQUIPMENT WEIGHT	Kg	100	250	310	420	500	820	850	1250	1620	2800	3800
	lbs	220	551	683	926	1102	1808	1874	2756	3571	6173	8378



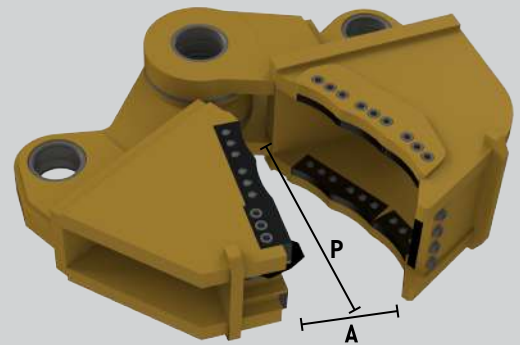
# MC SERIES COMBI KIT



Designed to demolish concrete and cut ferrous material present during mixed processing

MC MODEL (COMBI KIT)	U.M.	MC 5	MC 7	MC 10	MC 15	MC 18	MC 24	MC 30	MC 40	MC 55	MC 80	MC 110
OPENING (A)	mm	/	/	660	720	830	865	870	1100	1300	1600	1750
	in.	/	/	26	28.34	32.68	34.05	34.25	43.3	51.2	63	68.9
LENGHT (B)	mm	/	/	1695	1955	2115	2230	2485	2500	2750	3015	3270
	in.	/	/	66.73	70.08	83.27	87.79	97.83	98.42	108.27	118.70	128.74
WIDTH (P)	mm	/	/	490	575	605	570	615	500	750	925	1010
	in.	/	/	19.29	22.64	23.82	22.45	24.21	19.68	29.52	36.42	39.76
EQUIPMENT WEIGHT	Kg	/	/	300	430	470	750	780	1150	1350	2550	3750
	lbs	/	/	661	948	1036	1653	1720	2535	2976	5622	8267

# MC SERIES UNIVERSAL KIT

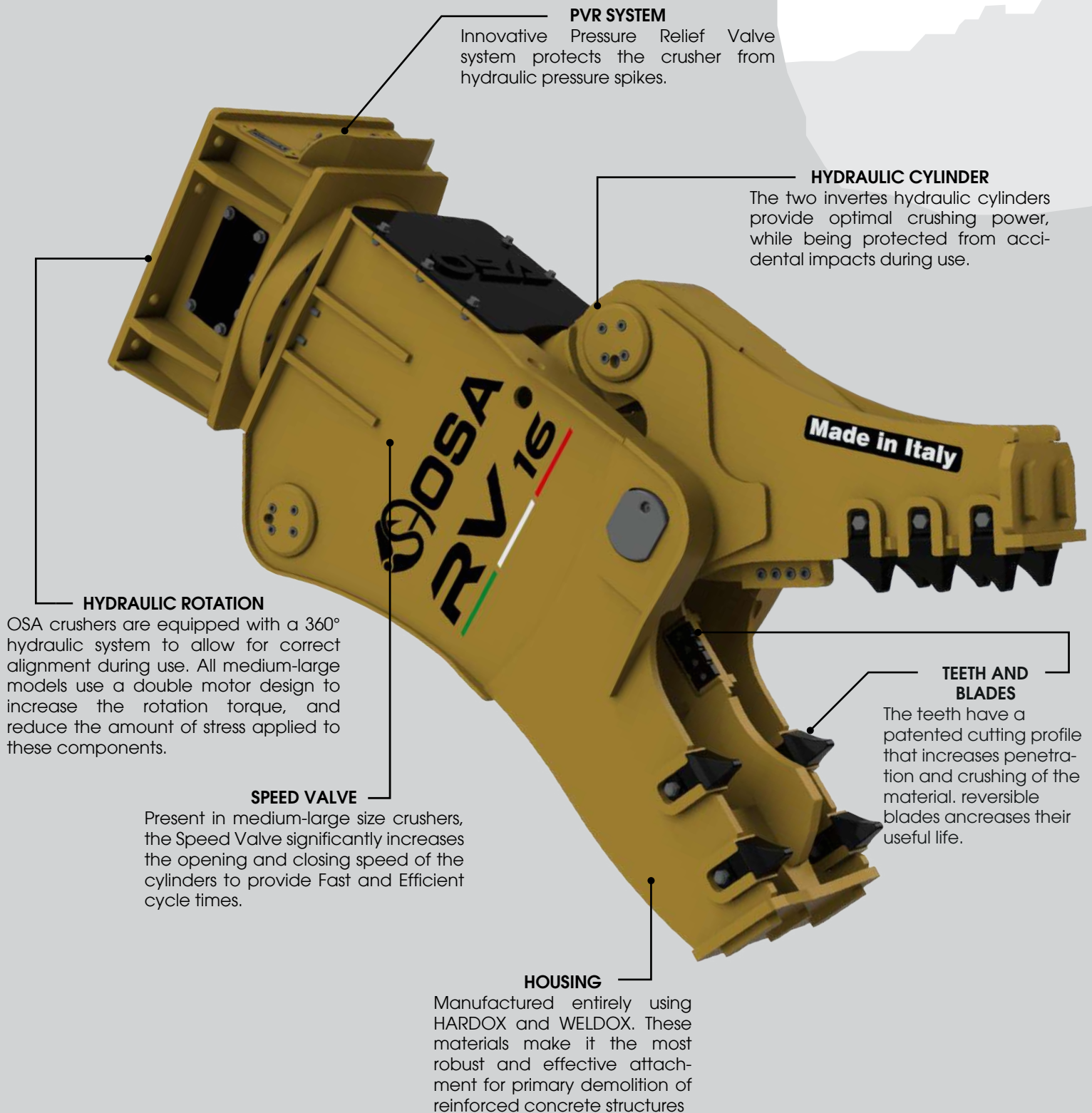


Suitable for both primary and secondary demolition

MC MODEL (UNIVERSAL KIT)	U.M.	MC 5	MC 7	MC 10	MC 15	MC 18	MC 24	MC 30	MC 40	MC 55	MC 80	MC 110
OPENING (A)	mm	/	/	600	610	630	770	800	820	1000	1400	1565
	in.	/	/	23.6	26.8	24.8	30.3	31.5	32.3	39.4	55.1	61.61
LENGHT (B)	mm	/	/	1655	1835	1980	2320	2390	2650	2795	3205	3506
	in.	/	/	65.16	72.24	77.95	91.33	94.09	104.33	110.04	126.18	138.03
WIDTH (P)	mm	/	/	450	455	470	470	500	650	795	1115	1246
	in.	/	/	17.72	17.91	18.50	18.50	19.68	25.59	31.30	43.90	49.06
EQUIPMENT WEIGHT	Kg	/	/	320	430	580	850	900	1150	1650	2600	3600
	lbs	/	/	705	948	1279	1874	1984	2535	3638	5732	7937

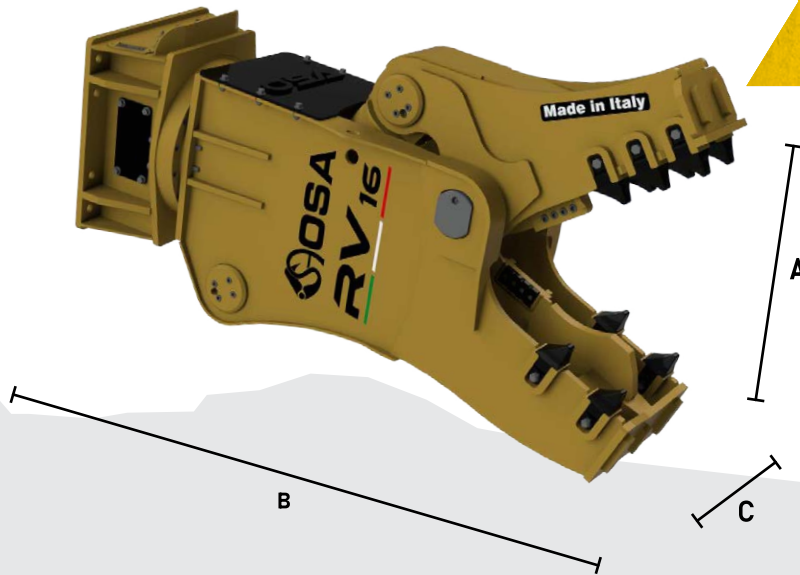
# RV SERIES

## ROTATING PULVERISER





# RV SERIES

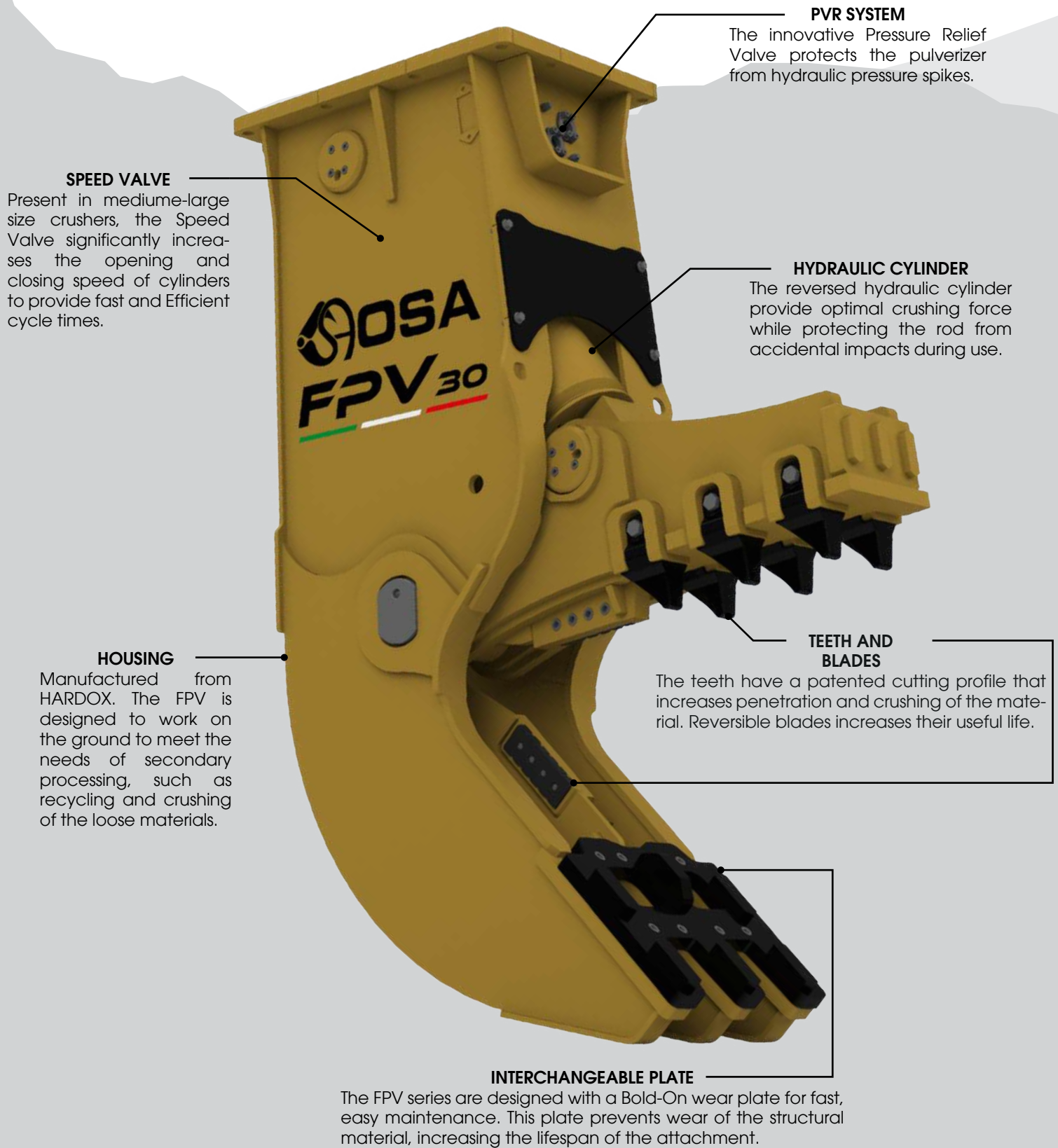


MODEL	U.M.	RV 6	RV 10	RV 16	RV 20	RV 25	RV 30	RV 40	RV 60	RV 80	RV 110
OPENING (A)	mm	520	630	790	840	880	1010	1130	1280	1350	1720
	in.	20	25	31	33.5	34.6	39.7	45	50	53	68
LENGHT (B)	mm.	1600	1815	2120	2300	2400	2660	2850	3230	3400	3800
	in.	63	71.5	83.5	90.6	94.5	105	112	127	134	150
DEPTH (C)	mm.	340	390	500	500	530	530	550	660	620	650
	in	13.4	15.5	19.7	19.7	20.8	20.8	21.65	25.98	24.4	25.6
EXCAVATOR WEIGHT	Ton	7/12	9/15	15/20	20/26	25/32	30/40	38/55	50/80	70/90	90/120
	lbs	15400/ 26500	19900/ 33000	33000/ 44000	44000/ 57300	55000/ 70500	66000/ 88000	84000/ 120000	110000/ 176000	155000/ 200000	200000/ 266000
EQUIPMENT WEIGHT	Kg.	660	1105	1710	2000	2500	2970	3940	6000	7800	9950
	lbs	1455	2436	3769	4400	5511	6547	8333	13228	17196	21936
OIL PRESSURE	Bar	250	310	340	340	340	340	340	340	340	340
	psi	3625	4496	4931	4931	4931	4931	4931	4931	4931	4931
OIL CAPACITY	L/min	80/100	100/150	150/220	210/260	250/300	280/320	300/350	330/400	400/500	500/600
	gal/min	21/26	26/39	39/58	55/68	66/79	74/84	79/92	87/105	106/132	132/158
ROTATION OIL PRESSURE	Bar	60	120/130	120/130	120/130	120/130	120/130	120/130	120/130	120/130	120/130
	psi	870	1740/1885	1740/1885	1740/1885	1740/1885	1740/1885	1740/1885	1740/1885	1740/1885	1740/1885
ROTATION OIL CAPACITY	L/min	20	20/30	20/30	20/30	50/60	50/60	50/60	50/60	70/80	70/80
	gal/min	5	5/8	5/8	5/8	13/16	13/16	13/16	13/16	18/21	18/21
OPERATING TOTAL WEIGHT	Kg.	710	1200	1850	2200	2700	3270	4300	6500	8500	10945
	lbs	1565	2645	4078	4850	5952	7209	9480	14330	18850	24129.5



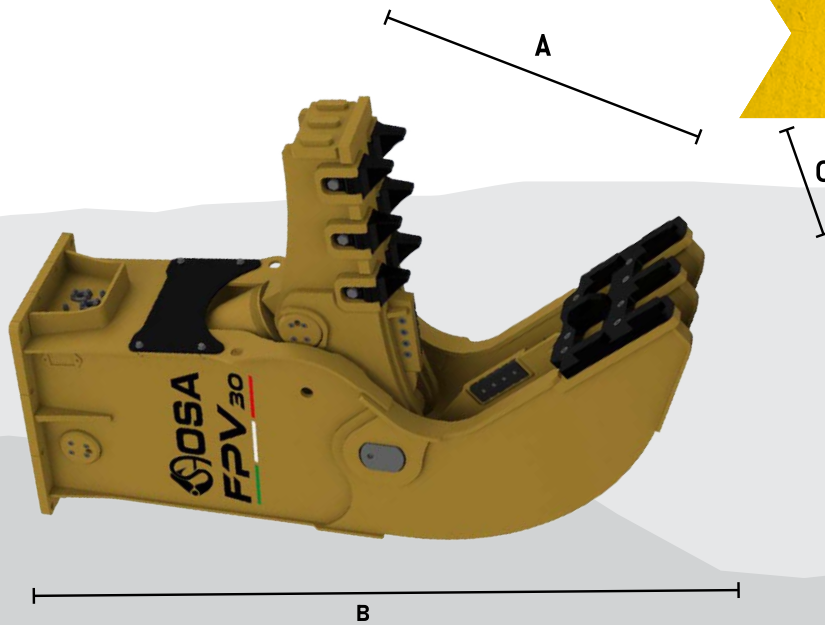
# FPV SERIES

## FIXED PULVERISER

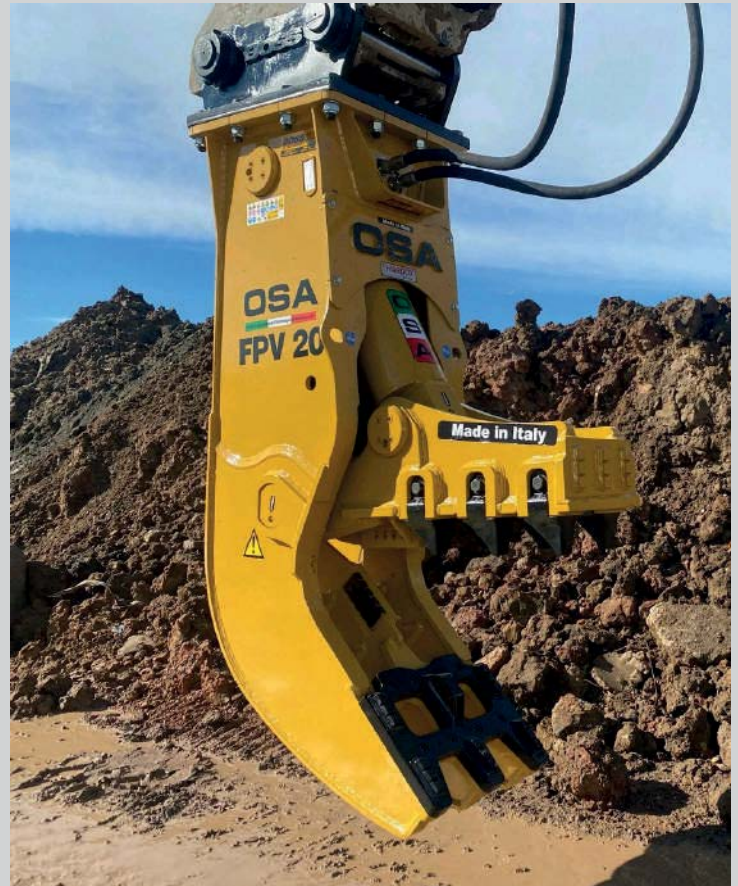




# FPV SERIES



MODEL	U.M.	FPV 6	FPV 12	FPV 17	FPV 20.1	FPV 30.1	FPV 45	FPV 60	FPV 100
OPENING (A)	mm	510	700	815	850	1040	1080	1130	1800
	in.	20	27	32	34	41	42.5	44.5	71
LENGHT (B)	mm.	1300	1920	2080	2300	2660	2700	2800	3200
	in.	51	76	82	91	105	106	110	126
WIDHT (C)	mm.	330	400	460	550	560	600	760	950
	in	13	15.75	18.1	21.65	22	23.6	29.9	37.40
EXCAVATOR WEIGHT	Ton	6/7	12/17	16/20	21/29	30/45	40/60	60/80	80/130
	lbs	13000/ 15500	26500/ 37500	35000/ 44000	46000/ 64000	66000/ 99000	88000/ 132000	132000/ 176000	176000/ 286500
EQUIPMENT WEIGHT	Kg.	500	1100	1550	2050	2800	4500	5400	10400
	lbs	1102	2425	3417	4520	6173	9921	11904	22928
OIL PRESSURE	Bar	250	310	340	340	340	340	340	340
	psi	3625	4495	4930	4930	4930	4930	4930	4930
OIL CAPACITY	L/min	80/100	180/220	200/240	220/300	280/340	300/350	400/500	500/600
	gal/min	21/26	47/58	52/63	58/79	73/90	79/92	106/132	132/158

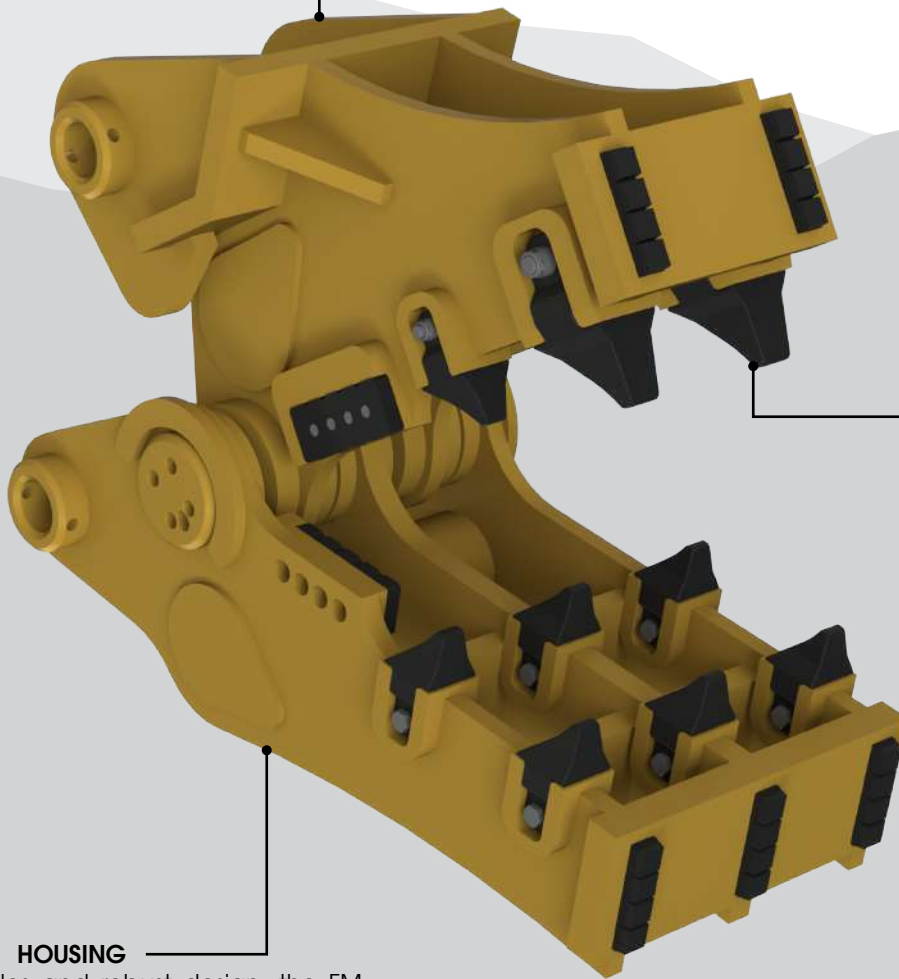


# FM SERIES

## MECHANICAL PULVERISER

### EXCAVATOR MOUNTED

The FM series mechanical pulverizers are mounted directly to the excavator arm, using the force of the excavator bucket cylinder to operate. This design prevents the need for an auxiliary hydraulic system.



### TEETH AND BLADES

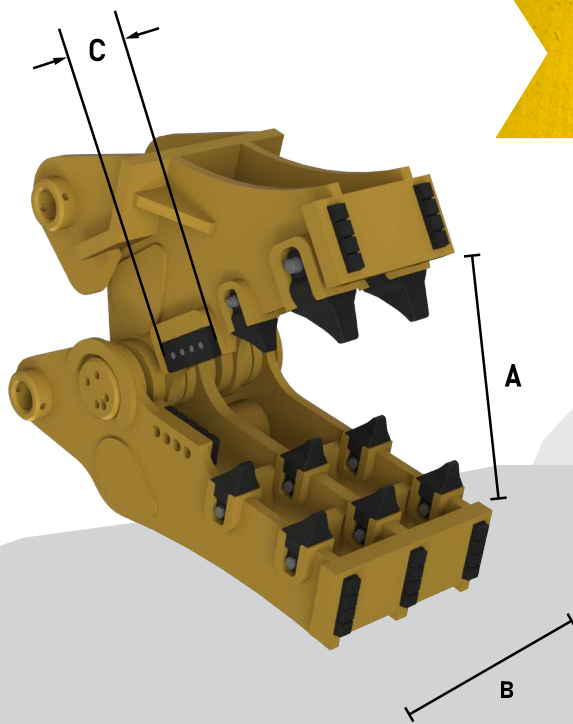
The teeth have a patented cutting profile that increases penetration and crushing of the material. Reversible blades increase their useful life.

### HOUSING

Extremely fast cycles and robust design, the FM series has been designed to crush items obtained from the demolition site. They easily separate reinforcement rod from concrete while processing it to a manageable material.



# FM SERIES



MODEL	U.M.	FM 20	FM 25	FM 30	FM 40	FM 55	FM 65	FM 95
OPENING (A)	mm	900	1100	1150	1250	1350	1450	1550
	in.	35	43	45	49	53	57	61
WIDTH (B)	mm.	600	690	710	750	810	870	930
	in.	24	27	28	29.5	32	34	37
BLADE (C)	mm.	200	200	240	240	240	280	280
	in	7.9	7.9	9.45	9.45	9.45	11	11
EXCAVATOR WEIGHT	Ton	18/22	22/32	32/42	42/60	50/65	60/80	90/100
	lbs	39683/ 48502	48502/ 70548	70548/ 92594	92594/ 132277	110231/ 143300	132277/ 176370	198416/ 220462
EQUIPMENT WEIGHT	Kg.	1000	1400	2000	2500	2800	4000	4900
	lbs	2205	3086	4409	5512	6173	8818	10803



# SH SERIES

## SHEARS

### HYDRAULIC ROTATION

SH shear are equipped with a 360° hydraulic rotation system to allow for correct alignment during use. All medium-large models use a double motor design to increase the rotation torque, and reduce the amount of stress applied to these components.

### PRV SYSTEM

The innovative Pressure Relief Valve protects the shear from hydraulic pressure spikes.

### HYDRAULIC CYLINDER

The reversed hydraulic cylinder provides optimal cutting power while protecting the rod from accidental impacts during use.

### JAW GUIDES

Ensures proper alignment of the jaws under high force conditions.

### SPEED VALVE

Present in medium-large size crushers, the Speed Valve significantly increases the opening and closing speed of the cylinders to provide Fast and Efficient cycle times.

### HOUSING

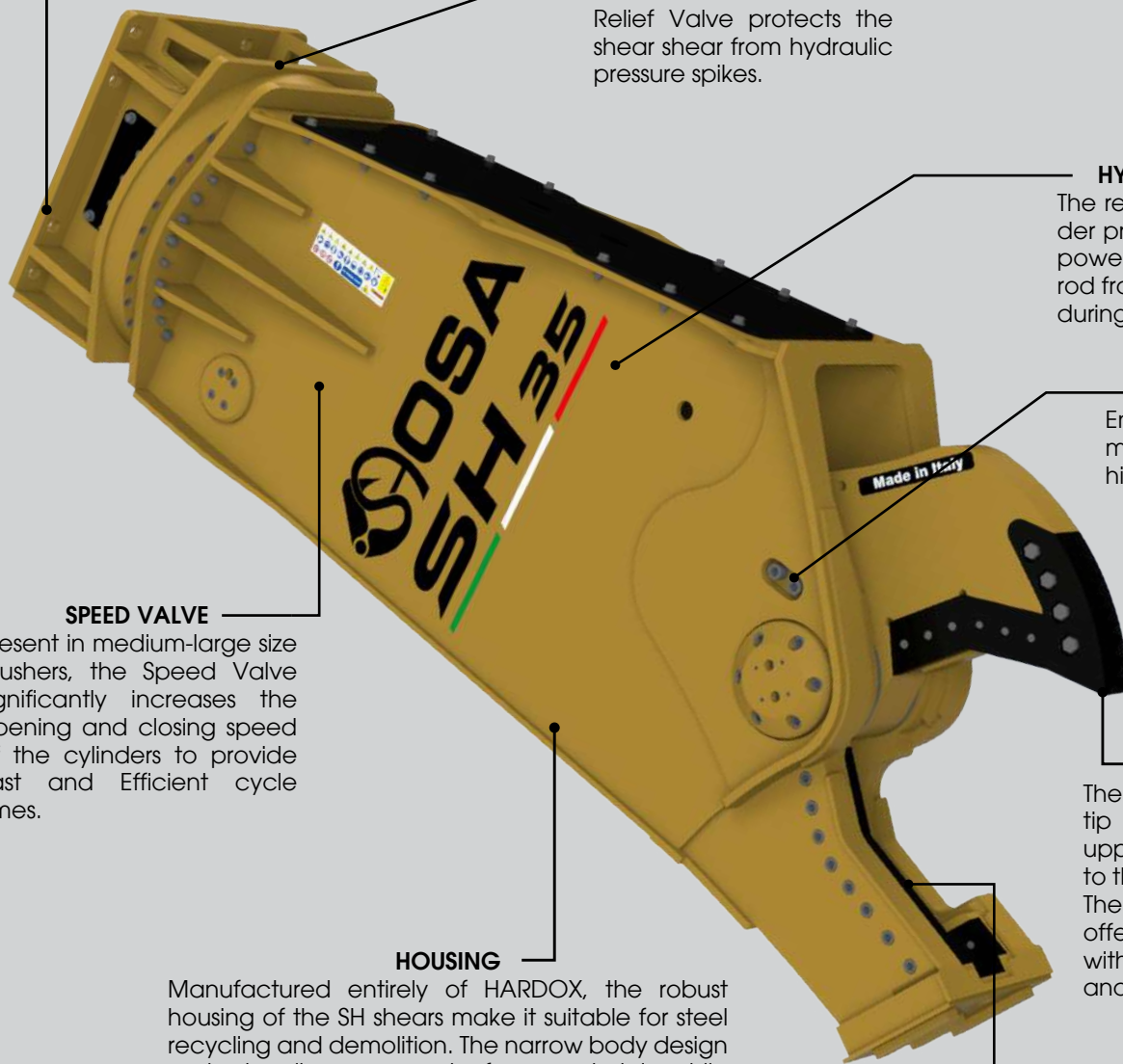
Manufactured entirely of HARDOX, the robust housing of the SH shears make it suitable for steel recycling and demolition. The narrow body design protects all components from material, while minimizing any obstruction on the operator's view.

### TIP

The shears use a Bolt-On tip that protects the upper jaw against wear to the structural material. The two-piece design offers great reliability, with maximum efficiency and cutting power.

### BLADES

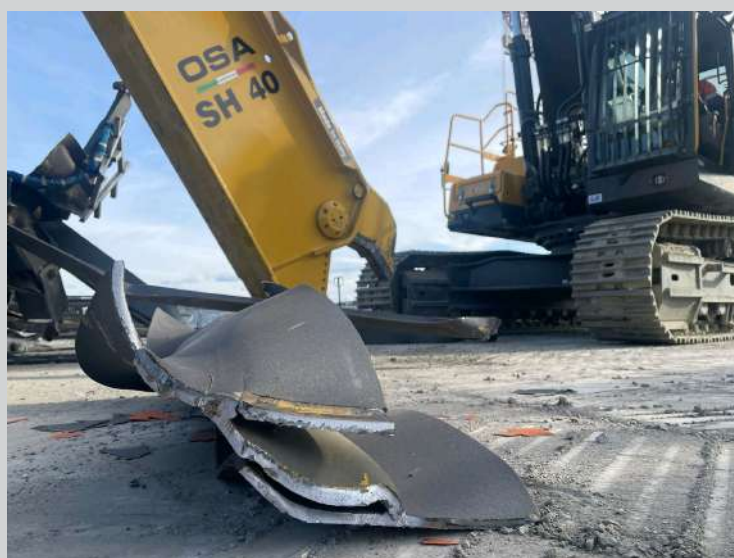
The interchangeable Bolt-On blades provide excellent wear resistance with quick and easy maintenance.







MODEL	U.M.	SH 6	SH 12	SH 20.1	SH 25.1	SH 35.1	SH 45	SH 55	SH 70	SH 80	SH 100	SH 120
OPENING (A)	mm	365	440	530	580	690	700	800	850	870	900	950
	in.	14	17	21	23	27	28	31	33	34	36	37
LENGHT (B)	mm.	1880	2450	2785	2840	3170	3361	4100	4700	4170	5000	5300
	in.	74	96	110	112	125	132	161	185	164	197	209
DEPTH (C)	mm.	240	400	495	510	570	690	690	800	850	900	950
	in.	9	16	19	20	22	27	27	31	33	35	37
EXCAVATOR WEIGHT AT BUCKET PLACE	Ton	7/12	12/18	20/28	26/34	34/40	45/60	50/70	70/100	80/110	90/120	100/130
	lbs	15400/ 26000	26000/ 39800	44000/ 61700	57300/ 75000	75000/ 88000	99210/ 132277	110000/ 155000	155000/ 220000	160000/ 220000	198000/ 264500	220000/ 286600
EXCAVATOR WEIGHT AT BOOM PLACE	Ton	4/7	7/10	14/18	16/22	22/30	28/35	30/45	45/60	50/70	70/90	90/110
	lbs	8800/ 15400	15400/ 22000	25000/ 39600	35000/ 48500	48500/ 66000	61730/ 77161	66000/ 99000	99000/ 132000	111000/ 154000	154000/ 198000	198000/ 242500
WEIGHT	Kg	640	1250	2030	2530	3200	4500	5630	6900	7830	9950	11500
	lbs	1411	2756	4475	5578	7055	9921	12412	15212	17262	21936	25353
OIL PRESSURE	Bar	250	310	340	340	340	340	340	340	340	340	340
	Psi	3626	4496	4931	4931	4931	4931	4931	4931	4931	4931	4931
OIL CAPACITY	L/min	80/100	120/160	200/220	200/260	240/300	300/350	350/400	380/430	400/500	500/700	700/900
	gal/min	21/26	31/42	53/58	53/68	63/79	79/92	92/106	100/113	106/132	132/185	185/238
ROTATION OIL PRESSURE	Bar	60	120/130	120/130	120/130	120/130	120/130	120/130	120/130	120/130	120/130	120/130
	Psi	870	1740/ 1885	1740/ 1885	1740/ 1885	1740/ 1885	1740/ 1885	1740/ 1885	1740/ 1885	1740/ 1885	1740/ 1885	1740/ 1885
ROTATION OIL CAPACITY	L/min	20	20/30	20/30	20/30	50/60	50/60	50/60	50/60	70/80	70/80	70/80
	lbs	5	5/8	5/8	5/8	13/16	13/16	13/16	13/16	18/21	18/21	18/21



# GR SERIES

## GRAPPLES

### HYDRAULIC ROTATION

The continuous 360° rotation offers precise positioning of the attachment during use. All medium-large models use two hydraulic motors to increase the rotation torque and reduce component strain. In addition, there is a rotation valve which protects the motor from unwanted pressure spikes.

### SHUT-OFF AND MAXIMUM VALVE

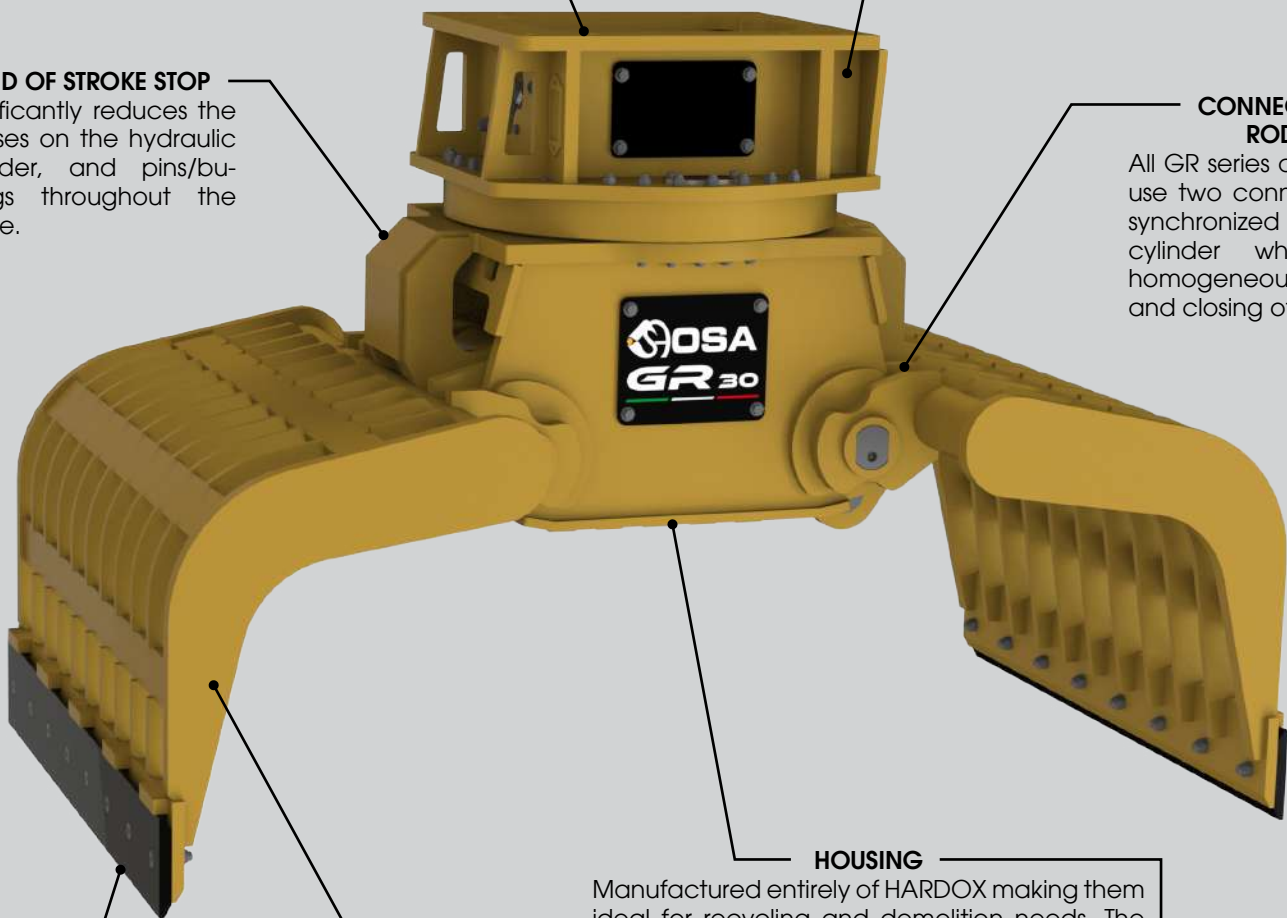
The medium-large GR series feature a block and load control valve. It protects the cylinder from pressure spikes coming from the excavator, and allows the load to be retained in the absence of operator input. This technology prevents unwanted fall of the load, making the work phases on site safer.

### END OF STROKE STOP

Significantly reduces the stresses on the hydraulic cylinder, and pins/bushings throughout the frame.

### CONNECTING RODS

All GR series attachments use two connecting rods synchronized with the cylinder which favors homogeneous opening and closing of the jaws.



### BLADE AND BLADE HOLDER

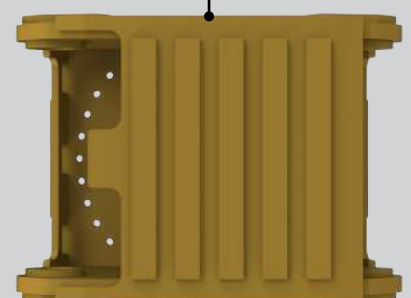
The blade and blade holder are made from anti-wearing HARDOX steel. The blades are interchangeable and easy to replace. Anti-shock bars are positioned on the blade holder in order to drastically reduce vibrations during the gripping phase.

### HOUSING

Manufactured entirely of HARDOX making them ideal for recycling and demolition needs. The robust design allows for efficient and safe handling of most construction materials such as wood, block/brick, plaster, etc.. The shell has HARDOX reinforcements positioned in high contact areas to protect it from impacts and reduce wear.

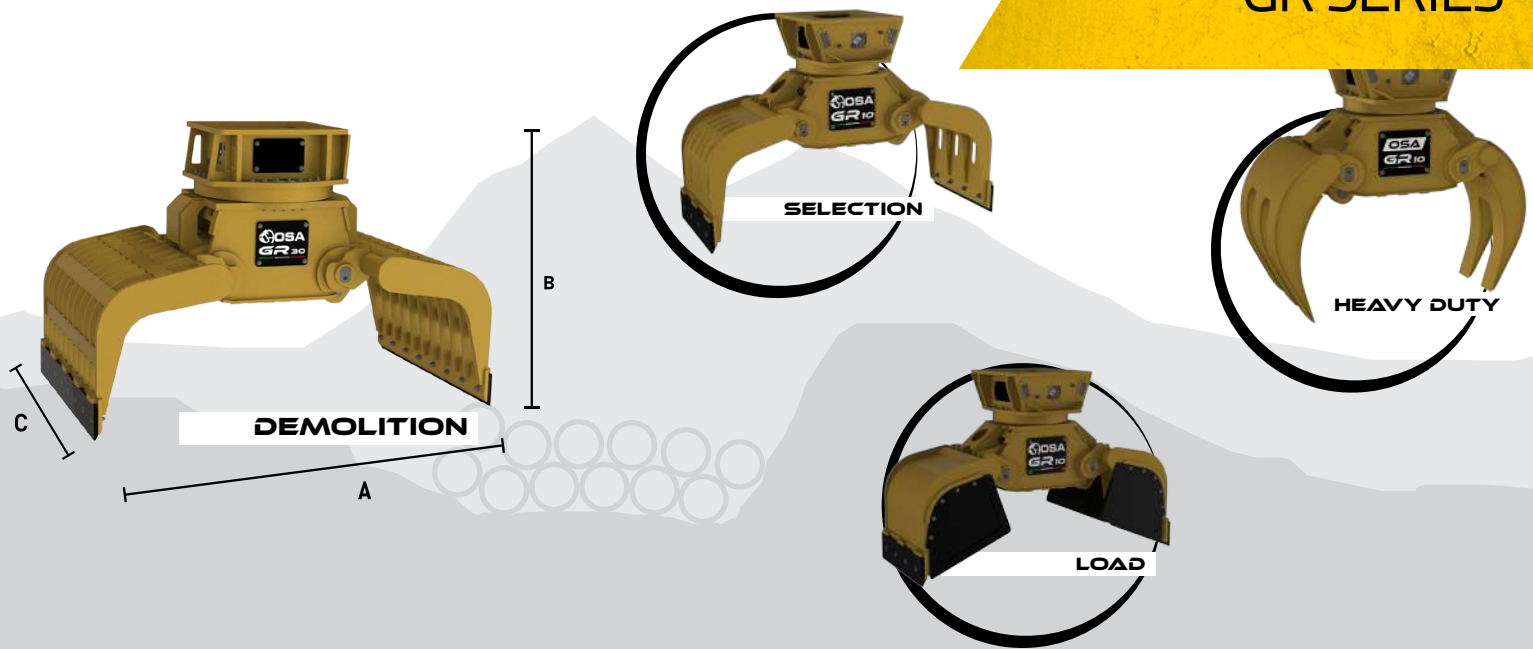
### JAWS

The GR series are available with various jaw styles to suit your site needs with a design offering exceptional strength and longevity.

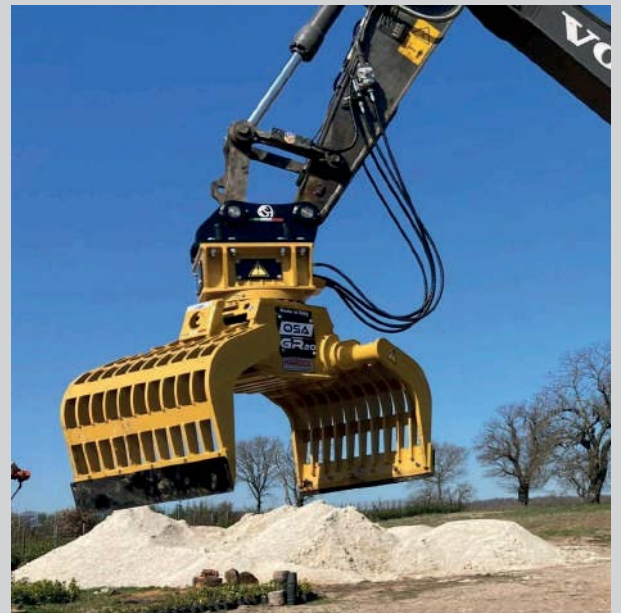




# GR SERIES

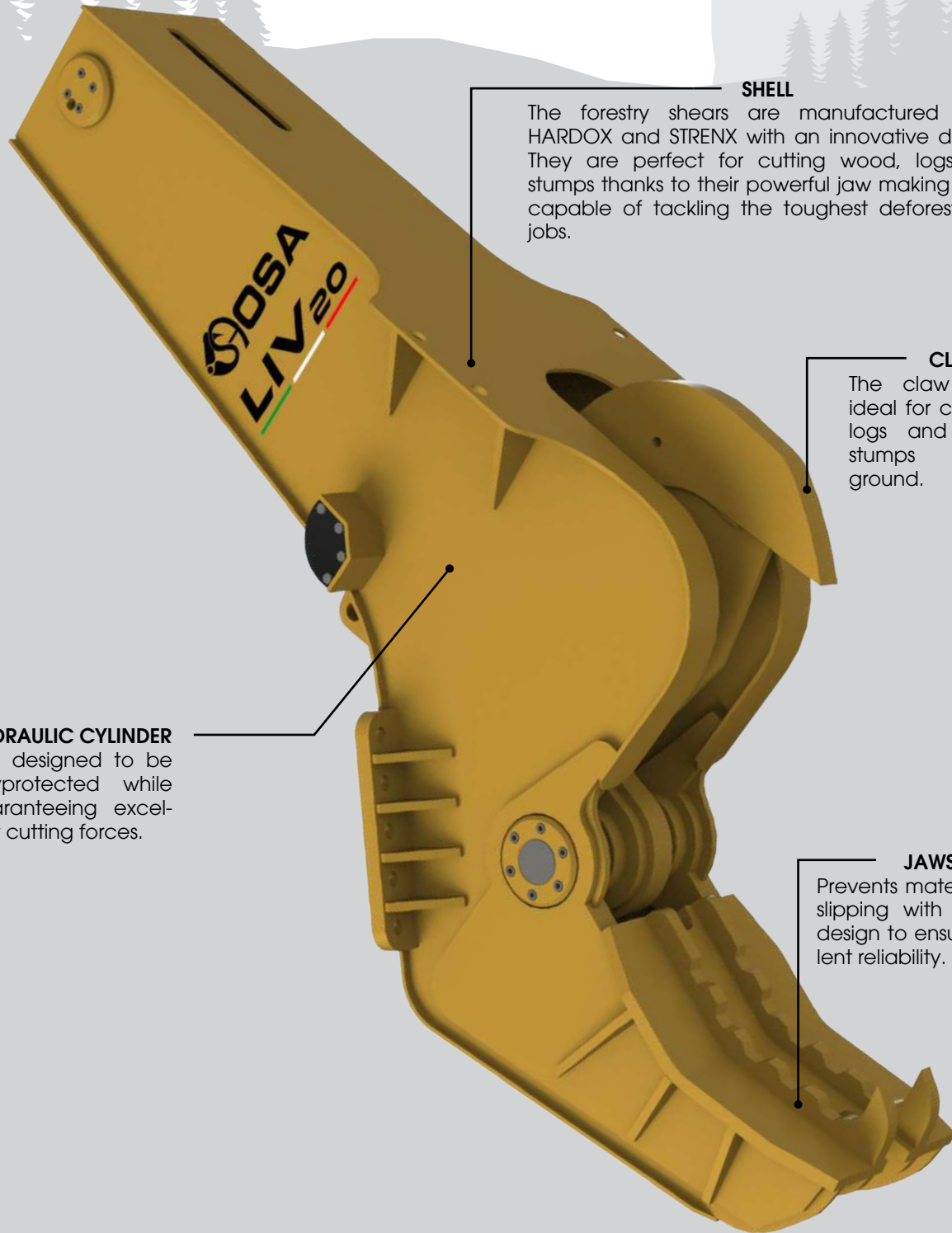


MODEL	U.M.	GR1	GR 3	GR 5	GR 7	GR 10	GR 15	GR 20	GR 25	GR 30	GR 40
OPENING (A)	mm	850	1050	1555	1750	2060	2145	2200	2430	2450	3000
	in.	33.5	41	61.2	65	81.1	84.5	86.6	96	96.5	118
HEIGHT (B)	mm.	740	940	1107	1375	1400	1475	1475	1581	1650	2300
	in.	29	37	43.6	54	55	58	58	62	65	90
WIDTH (C)	mm.	450	500	500	700	800	1000	1200	1400	1500	1500
	in.	17.5	20	20	27.5	31.5	39.5	47	55	59	59
EXCAVATOR WEIGHT	Ton	1.8/2.5	2.5/4	4/8	9/14	14/18	18/22	22/30	30/50	35/60	50/65
	lbs	3968/ 5510	5510/ 8820	8818/ 17636	19842/ 30864	30864/ 39683	39683/ 48502	48502/ 66139	66139/ 110231	77162/ 132277	110231/ 143300
EQUIPMENT WEIGHT	Kg	187	270	420	737	1060	1430	1787	2250	2680	3500
	lbs	412	595	926	1624	2336	3153	3940	4960	5908	7716
OIL PRESSURE	Bar	180	180	200	250	300	300	300	300	300	300
	psi	2610	2610	2900	3626	4351	4351	4351	4351	4351	4351
OIL CAPACITY	L/min	25	25	30	50	80/100	80/100	80/100	80/120	120/140	150
	gal/min	6	6	8	12	21/26	21/26	21/26	21/31	31/37	40
ROTATION OIL PRESSURE	Bar	50	50	50	60	120/130	120/130	120/130	120/130	120/130	120/130
	psi	725	725	725	870	1740/1885	1740/1885	1740/1885	1740/1885	1740/1885	1740/1885
ROTATION OIL CAPACITY	L/min	15	15	15	20	20/30	20/30	20/30	50/60	50/60	50/60
	gal/min	4	4	4	5	5/8	5/8	5/8	13/16	13/16	13/16
OPERATING TOTAL WEIGHT	L/min	195	300	480	810	1180	1550	1960	2475	2950	3900
	lbs	430	661	1060	1786	2600	3483	4321	5456	6500	8600



# LIV SERIES

## FORESTRY SHEAR



### SHELL

The forestry shears are manufactured using HARDOX and STRENX with an innovative design. They are perfect for cutting wood, logs and stumps thanks to their powerful jaw making them capable of tackling the toughest deforestation jobs.

### CLAW

The claw design is ideal for cutting large logs and extracting stumps from the ground.

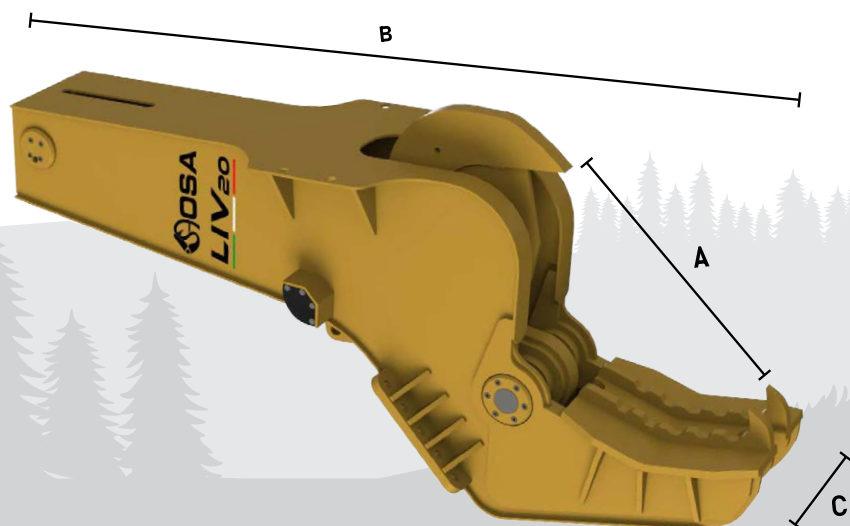
### HYDRAULIC CYLINDER

It is designed to be fully protected while guaranteeing excellent cutting forces.

### JAWS

Prevents materials from slipping with a strong design to ensure excellent reliability.

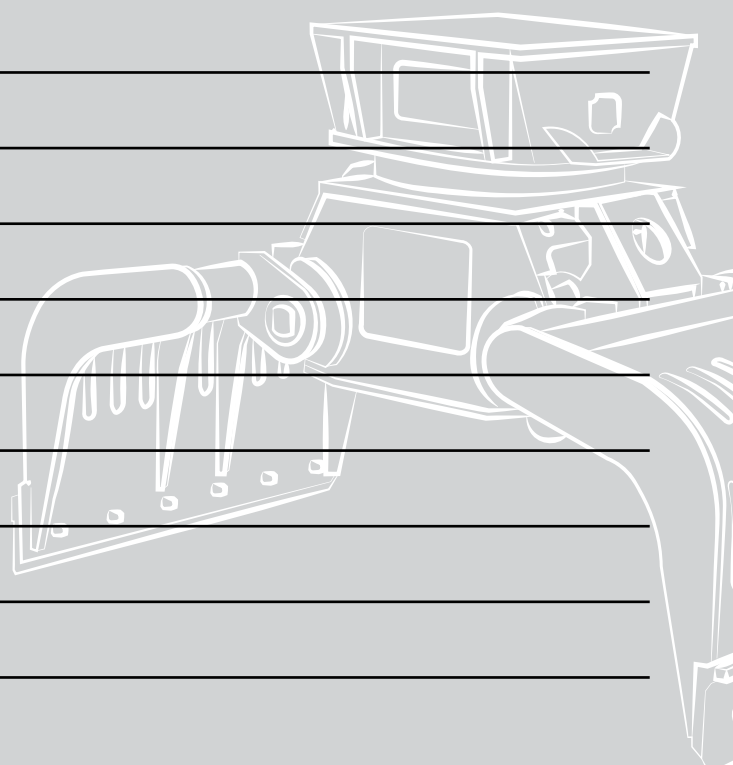




MODEL	U.M.	LIV 10	LIV 15	LIV 20
OPENING (A)	mm	600	790	1000
	in.	24	31	39
LENGHT (B)	mm	1870	2830	3500
	in.	74	111	138
WIDTH (C)	mm	350	530	650
	in.	14	21	26
EXCAVATOR WEIGHT	Ton	9/14	14/22	22/30
	lbs	19800/30800	30800/48500	48500/66200
EQUIPMENT WEIGHT	Kg	900	1510	2100
	lbs	1985	3329	4630
OIL PRESSURE	Bar	300	300	300
	psi	4350	4350	4350
OIL CAPACITY	l/min	180/200	200/240	240/300
	gal/min	48/52	52/63	63/79



# NOTES



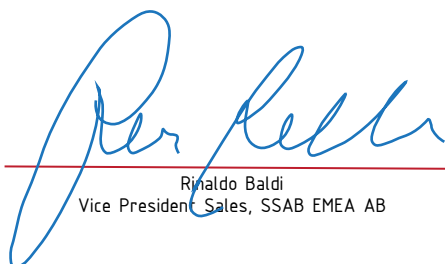




THIS CERTIFIES THAT

## **OSA DEMOLITION EQUIPMENT SRL**

uses genuine Hardox wear plate in its products in conformity with Hardox technical and quality standards and therefore has earned the right to display "Hardox In My Body" on its products - the guarantee of unbeatable performance, savings and lifetime.



---

Rinaldo Baldi  
Vice President Sales, SSAB EMEA AB







## About us

At Boss, we are absolutely passionate about our products and the industries that we serve!

The Boss range of brands has been selected for their outstanding design innovation, advanced engineering and uncompromising performance. So you can rely on them - to work longer, harder and faster.

### HANDLING BUSINESS LIKE A BOSS

This service delivery is structured to leave absolutely nothing to chance. From our friendly, dedicated staff, through to our large warehouse and efficient logistics, systems Boss is 100% focused on supporting the tight deadlines that our customers demand.

That's why Boss is the go-to attachment supplier of choice for a growing number of contractors throughout Australia, New Zealand and the Pacific.



Exclusive dealer for Australia, New Zealand & Pacific Islands  
**SALES, SERVICE AND HIRE AUSTRALIA WIDE**

☎ **1300 116 661** Office: +61 2 43404783  
sales@bossattachments.com.au [www.bossattachments.com.au](http://www.bossattachments.com.au)

